

Powder Actuated Fastening Systems

Powers is a proud member of:

Evergreen
MARKETING GROUP

Powers
FASTENERS

A domestic
company
headquartered
in Beaverton, OR



LIGHT DUTY

- .22 Caliber
- Single Shot
- Hammer Actuated

P1000

Hammer actuated, general purpose powder actuated tool. Designed for high reliability, low maintenance and economy. This tool uses four levels of power; grey through yellow loads (levels 1-4) and .300, 8mm head fasteners with lengths of 1/2" through 3". Grade 4 DIY market.

APPLICATIONS

- 1 x 2 to Block Wall
- 2 x 4 to Block Wall
- 2 x 4 to Concrete Slab
- Electrical Fixture to Concrete



Clamshell Packaging Cat. No. 52013

- **POWERFUL...** One blow sets pin flush.
- **COMFORTABLE...** Ergonomically designed soft handle.
- **FAST...** No pre-drilling or hole spotting.
- **QUIETER, FASTER and LESS RECOIL** than many other powder actuated tools.

LOADS



.22 CALIBER "A" LOW VELOCITY LOADS FOR POWERS P1,000, P2201, P7201, RAMSET® 721 AND M70, HILTI® DXE37 AND DXE72

CAT. NO.	DESCRIPTION	STD. BOX	STD. CTN.	MASTER CTN
50500	Gray, .22A	100	5,000	20,000
50502	Brown, .22A	100	5,000	20,000
50504	Green, .22A	100	5,000	20,000
50506	Yellow, .22A	100	5,000	20,000

PINS



DRIVE PIN SIZES (ALSO REFERENCE 8MM DRIVE PINS, SPECIALTY PINS & ASSEMBLIES STARTING ON PAGE 15)

.300 HEAD DIAMETER DRIVE PINS					.300 DIAMETER HEAD DRIVE PINS WITH TOP HAT					.300 HEAD DIAMETER DRIVE PINS WITH 7/8" WASHER				
CAT. NO.	SHANK LENGTH	SHANK DIA.	STD. BOX	STD. CTN.	CAT. NO.	SHANK LENGTH	SHANK DIA.	STD. BOX	STD. CTN.	CAT. NO.	SHANK LENGTH	SHANK DIA.	STD. BOX	STD. CTN.
50012	1/2" (K)	.145	100	5,000	50136	1/2" (K)	.145	100	5,000	50090	1"	.145	100	1,000
50016	5/8" (K)	.145	100	5,000	50138	5/8" (K)	.145	100	5,000	50092	1-1/4"	.145	100	1,000
50022	3/4"	.145	100	5,000	50140	3/4"	.145	100	5,000	50094	1-1/2"	.145	100	1,000
50026	1"	.145	100	5,000	50144	1"	.145	100	5,000	50096	2"	.145	100	1,000
50030	1-1/8"	.145	100	1,000	.300 HEAD DIAMETER DRIVE PINS - MASTER PACK					50098	2-1/2"	.145	100	1,000
50032	1-1/4"	.145	100	1,000	50980	1/2" (K)	.145	100	5,000	50100	3"	.145	100	1,000
50034	1-1/2"	.145	100	1,000	53300	5/8" (K)	.145	100	5,000	.300 HEAD DIAMETER DRIVE PINS WITH 1" WASHER				
50036	1-3/4"	.145	100	1,000	53400	5/8" (K) Top Hat	.145	100	5,000	50108	1-1/4"	.145	100	1,000
50038	2"	.145	100	1,000	51040	3/4"	.145	100	5,000	50110	1-1/2"	.145	100	1,000
50040	2-1/4"	.145	100	1,000	51100	1"	.145	100	5,000	50112	2"	.145	100	1,000
50042	2-3/8"	.145	100	1,000	51160	1-1/4"	.145	100	5,000	50114	2-1/2"	.145	100	1,000
50044	2-1/2"	.145	100	1,000	51340	1/2" (K) Top Hat	.145	100	5,000	50116	3"	.145	100	1,000
50046	2-3/4"	.145	100	1,000	51400	3/4" Top Hat	.145	100	5,000	.300 HEAD DIAMETER DRIVE PINS WITH 3/4" WASHER				
50048	3"	.145	100	1,000	51520	1" Top Hat	.145	100	5,000	50070	3/4"	.145	100	1,000
.300 HEAD DIAMETER STEP SHANK PINS					.300 HEAD DIAMETER DRIVE PINS WITH 1-7/16" INSULATION WASHER									
50158	3/4" Step Shank	.145/.130	100	1,000	50070	3/4"	.145	100	1,000	50122	1-1/2"	.145	100	1,000
50159	1" Step Shank	.145/.130	100	1,000	50080	2-1/2"	.145	100	1,000	50126	2-1/2"	.145	50	500

(K) - knurled

(K) - knurled



- LIGHT DUTY**
- .22 Caliber
 - Single Shot
 - 3" Pin Capacity

P2201

The P2201 is a low velocity, single shot, .22 caliber tool which can be used to install .300 head drive pins, 8mm head drive pins and 1/4"-20 threaded studs, up to 3" in total length. The P2201 is designed for maintenance or residential contractors.

APPLICATIONS

- Conduit Clip to Concrete
- Track to Floor
- Electrical Fixture to Concrete
- Electrical Fixture to Steel
- Wood to Concrete
- Wood to Steel
- Residential Construction



Clamshell Packaging Cat. No. 52007

TOOL KIT INCLUDES

- Safety Glasses, Disposable Ear Plugs
- Allen Wrenches, Wire Brushes, Tool Lubricant
- Spall Guard
- Pin Starter Kit
- † .300 Headed Pins: (50) 1/2", (50) 3/4", (15) 3" with 7/8" washer

REPLACEMENT PARTS (1 EACH)

Can be ordered separately

- 52522 Piston
- 52510 Nose Piece
- 52512 Piston Reset Pin

For additional spare parts please reference the tool manual or Powers' Buyers Guide.

LOADS



.22 CALIBER "A" LOW VELOCITY LOADS FOR POWERS P1,000, P2201, P7201, RAMSET® 721 AND M70, HILTI® DXE37 AND DXE72

CAT. NO.	DESCRIPTION	STD. BOX	STD. CTN.	MASTER CTN.
50500	Gray, .22A	100	5,000	20,000
50502	Brown, .22A	100	5,000	20,000
50504	Green, .22A	100	5,000	20,000
50506	Yellow, .22A	100	5,000	20,000



Tool Kit Cat. No. 52006



PINS

DRIVE PIN SIZES (ALSO REFERENCE 8MM DRIVE PINS, SPECIALTY PINS & ASSEMBLIES STARTING ON PAGE 15)

.300 HEAD DIAMETER DRIVE PINS

CAT. NO.	SHANK LENGTH	SHANK DIA.	STD. BOX	STD. CTN.
50012	1/2" (K)	.145	100	5,000
50016	5/8" (K)	.145	100	5,000
50022	3/4"	.145	100	5,000
50026	1"	.145	100	5,000
50030	1-1/8"	.145	100	1,000
50032	1-1/4"	.145	100	1,000
50034	1-1/2"	.145	100	1,000
50036	1-3/4"	.145	100	1,000
50038	2"	.145	100	1,000
50040	2-1/4"	.145	100	1,000
50042	2-3/8"	.145	100	1,000
50044	2-1/2"	.145	100	1,000
50046	2-3/4"	.145	100	1,000
50048	3"	.145	100	1,000

.300 HEAD DIAMETER STEP SHANK PINS

50158	3/4" Step Shank	.145/.130	100	1,000
50159	1" Step Shank	.145/.130	100	1,000

(K) - knurled

.300 DIAMETER HEAD DRIVE PINS WITH TOP HAT

CAT. NO.	SHANK LENGTH	SHANK DIA.	STD. BOX	STD. CTN.
50136	1/2" (K)	.145	100	5,000
50138	5/8" (K)	.145	100	5,000
50140	3/4"	.145	100	5,000
50144	1"	.145	100	5,000

.300 HEAD DIAMETER DRIVE PINS - MASTER PACK

50980	1/2" (K)	.145	1,000	5,000
53300	5/8" (K)	.145	1,000	5,000
53400	5/8" (K) Top Hat	.145	1,000	5,000
51040	3/4"	.145	1,000	5,000
51100	1"	.145	1,000	5,000
51160	1-1/4"	.145	1,000	5,000
51340	1/2" (K) Top Hat	.145	1,000	5,000
51400	3/4" Top Hat	.145	1,000	5,000
51520	1" Top Hat	.145	1,000	5,000

.300 HEAD DIAMETER DRIVE PINS WITH 3/4" WASHER

50070	3/4"	.145	100	1,000
50080	2-1/2"	.145	100	1,000
50082	3"	.145	100	1,000

(K) - knurled

.300 HEAD DIAMETER DRIVE PINS WITH 7/8" WASHER

CAT. NO.	SHANK LENGTH	SHANK DIA.	STD. BOX	STD. CTN.
50090	1"	.145	100	1,000
50092	1-1/4"	.145	100	1,000
50094	1-1/2"	.145	100	1,000
50096	2"	.145	100	1,000
50098	2-1/2"	.145	100	1,000
50100	3"	.145	100	1,000

.300 HEAD DIAMETER DRIVE PINS WITH 1" WASHER

50108	1-1/4"	.145	100	1,000
50110	1-1/2"	.145	100	1,000
50112	2"	.145	100	1,000
50114	2-1/2"	.145	100	1,000
50116	3"	.145	100	1,000

.300 HEAD DIAMETER DRIVE PINS WITH 1-7/16" INSULATION WASHER

50122	1-1/2"	.145	100	1,000
50126	2-1/2"	.145	50	500

MEDIUM DUTY

- .22 Caliber
- Single Shot
- 1-1/2" Pin Capacity

P7201

The P7201 is a low velocity, single shot .22 caliber tool which can be used to install .300" head drive pins, 8mm head drive pins and 1/4"-20 threaded studs up to 1-1/2" in total length. The P7201 is commonly used in the drywall trade, and designed for repetitive use.

APPLICATIONS

- Conduit Clip to Concrete
- Track to Floor
- Electrical Fixture to Concrete
- Electrical Fixture to Steel
- Wood to Concrete
- Wood to Steel

Blister Pack



Clamshell Packaging Cat. No. 52005



TOOL KIT INCLUDES

- Safety Glasses, Disposable Ear Plugs
- Allen Wrenches, Wire Brushes, Tool Lubricant
- Spall Guard
- Pin Starter Kit
 - † .300 Headed Pins: (50) 1/2", (50) 3/4", (15) 3" with 7/8" washer

REPLACEMENT PARTS (1 EACH)

Can be ordered separately

- 52300 Piston
- 52306 Nose Piece
- 52308 Piston Reset Pin

For additional spare parts please reference the tool manual or Powers' Buyers Guide.



Tool Kit Cat. No. 52004

LOADS



.22 CALIBER "A" LOW VELOCITY LOADS FOR POWERS P1,000, P2201, P7201, RAMSET® 721 AND M70, HILTI® DXE37 AND DXE72

CAT. NO.	DESCRIPTION	STD. BOX	STD. CTN.	MASTER CTN
50500	Gray, .22A	100	5,000	20,000
50502	Brown, .22A	100	5,000	20,000
50504	Green, .22A	100	5,000	20,000
50506	Yellow, .22A	100	5,000	20,000

PINS



DRIVE PIN SIZES (ALSO REFERENCE 8MM DRIVE PINS, SPECIALTY PINS & ASSEMBLIES STARTING ON PAGE 15)

.300 HEAD DIAMETER DRIVE PINS

CAT. NO.	SHANK LENGTH	SHANK DIA. Q	STD. BOX	STD. CTN.
50012	1/2" (K)	.145	100	5,000
50016	5/8" (K)	.145	100	5,000
50022	3/4"	.145	100	5,000
50026	1"	.145	100	5,000
50030	1-1/8"	.145	100	1,000
50032	1-1/4"	.145	100	1,000
50034	1-1/2"	.145	100	1,000

.300 HEAD DIAMETER STEP SHANK PINS

50158	3/4" Step Shank	.145/.130	100	1,000
50159	1" Step Shank	.145/.130	100	1,000

(K) - knurled

.300 DIAMETER HEAD DRIVE PINS WITH TOP HAT

CAT. NO.	SHANK LENGTH	SHANK DIA.	STD. BOX	STD. CTN.
50136	1/2" (K)	.145	100	5,000
50138	5/8" (K)	.145	100	5,000
50140	3/4"	.145	100	5,000
50144	1"	.145	100	5,000

.300 HEAD DIAMETER DRIVE PINS - MASTER PACK

50980	1/2" (K)	.145	1,000	5,000
53300	5/8" (K)	.145	1,000	5,000
53400	5/8" (K) Top Hat	.145	1,000	5,000
51040	3/4"	.145	1,000	5,000
51100	1"	.145	1,000	5,000
51160	1-1/4"	.145	1,000	5,000
51340	1/2" (K) Top Hat	.145	1,000	5,000
51400	3/4" Top Hat	.145	1,000	5,000
51520	1" Top Hat	.145	1,000	5,000

(K) - knurled

.300 HEAD DIAMETER DRIVE PINS WITH 3/4" WASHER

50070	3/4"	.145	100	1,000
-------	------	------	-----	-------

.300 HEAD DIAMETER DRIVE PINS WITH 7/8" WASHER

50090	1"	.145	100	1,000
50092	1-1/4"	.145	100	1,000
50094	1-1/2"	1.145	100	1,000

.300 HEAD DIAMETER DRIVE PINS WITH 1" WASHER

50108	1-1/4"	.145	100	1,000
50110	1-1/2"	.145	100	1,000

.300 HEAD DIAMETER DRIVE PINS WITH 1-7/16" INSULATION WASHER

50122	1-1/2"	.145	100	1,000
-------	--------	------	-----	-------



MEDIUM DUTY

- .25 Caliber
- 10 Load Strip
- 1-1/2" Pin Capacity

P35s

The P35s is specially designed for acoustical and drywall contractors. It is a low velocity, semi-automatic tool which can be used to install .300 head drive pins, 8mm head drive pins and 1/4"-20 threaded studs up to 1-1/2" in total length. The P35s is designed for high speed and repetitive volume applications. The standard version of the tool is supplied with a flat end piston and a full size baseplate/guide. A limited access baseplate/guide assembly is also available.

APPLICATIONS

- Conduit Clip to Concrete
- Track to Floor
- Electrical Fixture to Concrete
- Electrical Fixture to Steel
- Wood to Concrete
- Wood to Steel
- Commercial Construction
- Reliable and Compact for Short Pin Applications

Tool Kit Cat. No. 52002

Limited Access Tool Kit
Cat. No. 52003



Clamshell Packaging Cat. No. 52023



TOOL KIT INCLUDES

- Safety Glasses, Disposable Ear Plugs
- Allen Wrenches, Wire Brushes, Tool Lubricant
- Spall Guard, Spare Parts
- Pin Starter Kit
 - † .300 Headed Pins: (50) 1/2", (50) 3/4", (50) 1-1/2"

REPLACEMENT PARTS (1 EACH)

Can be ordered separately

- 52200 Piston Standard 21/SDF
- 52204 Guide 21/F3-1Baseplate 21/S1
- 52206 Baseplate 21/S1

For additional spare parts please reference the tool manual or Powers' Buyers Guide.



PINS

DRIVE PIN SIZES (ALSO REFERENCE 8MM DRIVE PINS, SPECIALTY PINS & ASSEMBLIES STARTING ON PAGE 15)

.300 HEAD DIAMETER DRIVE PINS				
CAT. NO.	SHANK LENGTH	SHANK DIA.	STD. BOX	STD. CTN.
50012	1/2" (K)	.145	100	5,000
50016	5/8" (K)	.145	100	5,000
50022	3/4"	.145	100	5,000
50026	1"	.145	100	5,000
50030	1-1/8"	.145	100	1,000
50032	1-1/4"	.145	100	1,000
50034	1-1/2"	.145	100	1,000

.300 HEAD DIAMETER STEP SHANK PINS				
CAT. NO.	SHANK LENGTH	SHANK DIA.	STD. BOX	STD. CTN.
50158	3/4" Step Shank	.145/.130	100	1,000
50159	1" Step Shank	.145/.130	100	1,000

(K) - knurled

.300 DIAMETER HEAD DRIVE PINS WITH TOP HAT				
CAT. NO.	SHANK LENGTH	SHANK DIA.	STD. BOX	STD. CTN.
50136	1/2" (K)	.145	100	5,000
50138	5/8" (K)	.145	100	5,000
50140	3/4"	.145	100	5,000
50144	1"	.145	100	5,000

.300 HEAD DIAMETER DRIVE PINS - MASTER PACK				
CAT. NO.	SHANK LENGTH	SHANK DIA.	STD. BOX	STD. CTN.
50980	1/2" (K)	.145	1,000	5,000
53300	5/8" (K)	.145	1,000	5,000
53400	5/8" (K) Top Hat	.145	1,000	5,000
51040	3/4"	.145	1,000	5,000
51100	1"	.145	1,000	5,000
51160	1-1/4"	.145	1,000	5,000
51340	1/2" (K) Top Hat	.145	1,000	5,000
51400	3/4" Top Hat	.145	1,000	5,000
51520	1" Top Hat	.145	1,000	5,000

(K) - knurled

.300 HEAD DIAMETER DRIVE PINS WITH 3/4" WASHER				
CAT. NO.	SHANK LENGTH	SHANK DIA.	STD. BOX	STD. CTN.
50070	3/4"	.145	100	1,000

.300 HEAD DIAMETER DRIVE PINS WITH 7/8" WASHER				
CAT. NO.	SHANK LENGTH	SHANK DIA.	STD. BOX	STD. CTN.
50090	1"	.145	100	1,000
50092	1-1/4"	.145	100	1,000
50094	1-1/2"	.145	100	1,000

.300 HEAD DIAMETER DRIVE PINS WITH 1" WASHER				
CAT. NO.	SHANK LENGTH	SHANK DIA.	STD. BOX	STD. CTN.
50108	1-1/4"	.145	100	1,000
50110	1-1/2"	.145	100	1,000

.300 HEAD DIAMETER DRIVE PINS WITH 1-7/16" INSULATION WASHER				
CAT. NO.	SHANK LENGTH	SHANK DIA.	STD. BOX	STD. CTN.
50122	1-1/2"	.145	100	1,000

LOADS



.25 CALIBER 10 LOAD STRIPS FOR POWERS P35S AND HILTI® DX35

CAT. NO.	DESCRIPTION	STD. BOX	STD. CTN.	MASTER CTN.
50570	Green, .25 strip	100	1,000	20,000
50574	Yellow, .25 strip	100	1,000	20,000
50578	Red, .25 strip	100	1,000	20,000

.25 CALIBER 10 LOAD STRIPS - MASTER PACK

CAT. NO.	DESCRIPTION	STD. BOX	STD. CTN.	MASTER CTN.
50572	Green, .25 strip		1,000	20,000
50576	Yellow, .25 strip		1,000	20,000
50580	Red, .25 strip		1,000	20,000

ACCESSORIES

- 52041 6' Smacker Pole Tool (Universal Bump Tool)
- 50065 Standard 6' Pole Tool (Trigger Style)
- 50066 Standard 8' Pole Tool (Trigger Style)

P3500

HEAVY DUTY

- .27 Caliber
- 10 Load Strip
- 3" Pin Capacity

The P3500 is a low velocity, semi-automatic .27 caliber tool which can be used to install .300 head drive pins, 8mm head drive pins and 1/4"-20 threaded studs, up to 3" in total length. The P3500 is designed for high speed, durability and repetitive volume applications.

APPLICATIONS

- Conduit Clip to Concrete
- Wood to Concrete
- Wood to Steel
- Electrical Fixture to Concrete
- Electrical Fixture to Steel
- Concrete Forming
- Commercial / Residential Construction

Blister Pack



Clamshell Packaging Cat. No. 52001

Tool Kit Cat. No. 52000



TOOL KIT INCLUDES

- Safety Glasses, Disposable Ear Plugs
- Allen Wrenches, Wire Brushes, Tool Lubricant
- Spall Guard, Spare Parts
- Pin Starter Kit
 - † .300 Headed Pins: (50) 1/2", (50) 3/4", (15) 3" with 7/8" washer

REPLACEMENT PARTS (1 EA.)

Can be ordered separately

- 52106 Piston Ring
- 52108 Guide 2/F-3
- 52110 Base Plate 2/S-13

For additional spare parts please reference the tool manual or Powers' Buyers Guide.

ACCESSORIES

- 52041 6' Smacker Pole Tool (Universal Bump Tool)
- 50065 Standard 6' Pole Tool (Trigger Style)
- 50066 Standard 8' Pole Tool (Trigger Style)

LOADS



.27 CALIBER SAFETY STRIP® FOR POWERS P3500/ PA3500, PA351, RAMSET® SA270, VIPER, HILTI® DX350, DX351, DX36M, AND DX451

CAT. NO.	DESCRIPTION	STD. BOX	STD. CTN.
50620	Brown, .27 safety strip	100	1,000
50622	Green, .27 safety strip	100	1,000
50626	Yellow, .27 safety strip	100	1,000
50630	Red, .27 safety strip	100	1,000
.27 CALIBER SAFETY STRIP LOADS - MASTER PACK			
50624	Green, .27 safety strip	1,000	10,000
50628	Yellow, .27 safety strip	1,000	10,000
50632	Red, .27 safety strip	1,000	10,000

PINS



DRIVE PIN SIZES (ALSO REFERENCE 8MM DRIVE PINS, SPECIALTY PINS & ASSEMBLIES STARTING ON PAGE 15)

.300 HEAD DIAMETER DRIVE PINS

CAT. NO.	SHANK LENGTH	SHANK DIA.	STD. BOX	STD. CTN.
50012	1/2" (K)	.145	100	5,000
50016	5/8" (K)	.145	100	5,000
50022	3/4"	.145	100	5,000
50026	1"	.145	100	5,000
50030	1-1/8"	.145	100	1,000
50032	1-1/4"	.145	100	1,000
50034	1-1/2"	.145	100	1,000
50036	1-3/4"	.145	100	1,000
50038	2"	.145	100	1,000
50040	2-1/4"	.145	100	1,000
50042	2-3/8"	.145	100	1,000
50044	2-1/2"	.145	100	1,000
50046	2-3/4"	.145	100	1,000
50048	3"	.145	100	1,000

.300 HEAD DIAMETER STEP SHANK PINS

50158	3/4" Step Shank	.145/.130	100	1,000
50159	1" Step Shank	.145/.130	100	1,000

(K) - knurled

.300 DIAMETER HEAD DRIVE PINS WITH TOP HAT

CAT. NO.	SHANK LENGTH	SHANK DIA.	STD. BOX	STD. CTN.
50136	1/2" (K)	.145	100	5,000
50138	5/8" (K)	.145	100	5,000
50140	3/4"	.145	100	5,000
50144	1"	.145	100	5,000
.300 HEAD DIAMETER DRIVE PINS - MASTER PACK				
50980	1/2" (K)	.145	1,000	5,000
53300	5/8" (K)	.145	1,000	5,000
53400	5/8" (K) Top Hat	.145	1,000	5,000
51040	3/4"	.145	1,000	5,000
51100	1"	.145	1,000	5,000
51160	1-1/4"	.145	1,000	5,000
51340	1/2" (K) Top Hat	.145	1,000	5,000
51400	3/4" Top Hat	.145	1,000	5,000
51520	1" Top Hat	.145	1,000	5,000

.300 HEAD DIAMETER DRIVE PINS WITH 3/4" WASHER

50070	3/4"	.145	100	1,000
50080	2-1/2"	.145	100	1,000
50082	3"	.145	100	1,000

(K) - knurled

.300 HEAD DIAMETER DRIVE PINS WITH 7/8" WASHER

CAT. NO.	SHANK LENGTH	SHANK DIA.	STD. BOX	STD. CTN.
50090	1"	.145	100	1,000
50092	1-1/4"	.145	100	1,000
50094	1-1/2"	.145	100	1,000
50096	2"	.145	100	1,000
50098	2-1/2"	.145	100	1,000
50100	3"	.145	100	1,000
.300 HEAD DIAMETER DRIVE PINS WITH 1" WASHER				
50108	1-1/4"	.145	100	1,000
50110	1-1/2"	.145	100	1,000
50112	2"	.145	100	1,000
50114	2-1/2"	.145	100	1,000
50116	3"	.145	100	1,000

.300 HEAD DIAMETER DRIVE PINS WITH 1-7/16" INSULATION WASHER

50122	1-1/2"	.145	100	1,000
50126	2-1/2"	.145	50	500



**HEAVY DUTY
POWER ADJUSTABLE**

- .27 Caliber
- 10 Load Strip
- 3" Pin Capacity

PA3500

The PA3500 is a modified version of the P3500 that includes a power adjuster, allowing the operator to effectively decrease the power level of the load being used by up to two (2) levels. Ex. A red load can be adjusted down to the level of a green load.

APPLICATIONS

- Conduit Clip to Concrete
- Wood to Concrete
- Wood to Steel
- Electrical Fixture to Concrete
- Electrical Fixture to Steel
- Concrete Forming
- Commercial / Residential Construction

Blister Pack



Clamshell Packaging Cat. No. 52025

Tool Kit Cat. No. 52019



TOOL KIT INCLUDES

- Safety Glasses, Disposable Ear Plugs
- Allen Wrenches, Wire Brushes, Tool Lubricant
- Spall Guard, Spare Parts
- Pin Starter Kit
- † .300 Headed Pins: (50) 1/2", (50) 3/4", (15) 3" with 7/8" washer

REPLACEMENT PARTS (1 EA.)

Can be ordered separately

- 52103 PA Piston Flat End with Ring
- 52108 Guide 2/F-3
- 52110 Base Plate 2/S-13

For additional spare parts please reference the tool manual or Powers' Buyers Guide.

ACCESSORIES

- 52041 6' Smacker Pole Tool (Universal Bump Tool)
- 50065 Standard 6' Pole Tool (Trigger Style)
- 50066 Standard 8' Pole Tool (Trigger Style)

LOADS



.27 CALIBER SAFETY STRIP® FOR POWERS P3500 / PA3500, PA351, RAMSET® SA270, VIPER, HILTI® DX350, DX351, DX36M, AND DX451

CAT. NO.	DESCRIPTION	STD. BOX	STD. CTN.
50620	Brown, .27 safety strip	100	1,000
50622	Green, .27 safety strip	100	1,000
50626	Yellow, .27 safety strip	100	1,000
50630	Red, .27 safety strip	100	1,000
.27 CALIBER SAFETY STRIP LOADS - MASTER PACK			
50624	Green, .27 safety strip	1,000	10,000
50628	Yellow, .27 safety strip	1,000	10,000
50632	Red, .27 safety strip	1,000	10,000

PINS



DRIVE PIN SIZES (ALSO REFERENCE 8MM DRIVE PINS, SPECIALTY PINS & ASSEMBLIES STARTING ON PAGE 15)

.300 HEAD DIAMETER DRIVE PINS

CAT. NO.	SHANK LENGTH	SHANK DIA.	STD. BOX	STD. CTN.
50012	1/2" (K)	.145	100	5,000
50016	5/8" (K)	.145	100	5,000
50022	3/4"	.145	100	5,000
50026	1"	.145	100	5,000
50030	1-1/8"	.145	100	5,000
50032	1-1/4"	.145	100	5,000
50034	1-1/2"	.145	100	5,000
50036	1-3/4"	.145	100	5,000
50038	2"	.145	100	5,000
50040	2-1/4"	.145	100	5,000
50042	2-3/8"	.145	100	5,000
50044	2-1/2"	.145	100	5,000
50046	2-3/4"	.145	100	5,000
50048	3"	.145	100	5,000

.300 DIAMETER HEAD DRIVE PINS WITH TOP HAT

CAT. NO.	SHANK LENGTH	SHANK DIA.	STD. BOX	STD. CTN.
50136	1/2" (K)	.145	100	5,000
50138	5/8" (K)	.145	100	5,000
50140	3/4"	.145	100	5,000
50144	1"	.145	100	5,000

.300 HEAD DIAMETER DRIVE PINS - MASTER PACK

50980	1/2" (K)	.145	1,000	5,000
53300	5/8" (K)	.145	1,000	5,000
53400	5/8" (K) Top Hat	.145	1,000	5,000
51040	3/4"	.145	1,000	5,000
51100	1"	.145	1,000	5,000
51160	1-1/4"	.145	1,000	5,000
51340	1/2" (K) Top Hat	.145	1,000	5,000
51400	3/4" Top Hat	.145	1,000	5,000
51520	1" Top Hat	.145	1,000	5,000

.300 HEAD DIAMETER DRIVE PINS WITH 7/8" WASHER

CAT. NO.	SHANK LENGTH	SHANK DIA.	STD. BOX	STD. CTN.
50090	1"	.145	100	1,000
50092	1-1/4"	.145	100	1,000
50094	1-1/2"	.145	100	1,000
50096	2"	.145	100	1,000
50098	2-1/2"	.145	100	1,000
50100	3"	.145	100	1,000

.300 HEAD DIAMETER DRIVE PINS WITH 1" WASHER

50108	1-1/4"	.145	100	1,000
50110	1-1/2"	.145	100	1,000
50112	2"	.145	100	1,000
50114	2-1/2"	.145	100	1,000
50116	3"	.145	100	1,000

.300 HEAD DIAMETER STEP SHANK PINS

50158	3/4" Step Shank	.145/.130	100	1,000
50159	1" Step Shank	.145/.130	100	1,000

(K) - knurled

.300 HEAD DIAMETER DRIVE PINS WITH 3/4" WASHER

50070	3/4"	.145	100	1,000
50080	2-1/2"	.145	100	1,000
50082	3"	.145	100	1,000

(K) - knurled

.300 HEAD DIAMETER DRIVE PINS WITH 1-7/16" INSULATION WASHER

50122	1-1/2"	.145	100	1,000
50126	2-1/2"	.145	50	500

P3801

Powerful and reliable heavy-duty powder actuated tool, for installing 3/8" threaded studs into concrete, steel and 10mm pins into concrete. This tool features an easy load ejector and has a low recoil for greater operator comfort. The P3801 is independent of any external power source saving you time and money.

APPLICATIONS

- Hanging Sprinkler Pipe
- Heavy Duty Applications for Steel and Concrete
- Electrical Fixtures
- Hard Concrete

HEAVY DUTY

- .27 Caliber • Single Shot
- 1/4" to 3/8" Threaded Studs, 10mm Head and 3/8" Headed Drive Pins



Tool Kit Cat. No. 52008

TOOL KIT INCLUDES

- Safety Glasses, Disposable Ear Plugs
- Allen Wrenches, Wire Brushes, Tool Lubricant
- Spall Guard, Spare Parts
- Pin Starter Kit
 - † Threaded Studs: (100) 1/4" (50) 3/8"
 - † .27 Caliber Long Loads: (100) Yellow, (100) Red, (100) Purple

REPLACEMENT PARTS (1 EACH)

Can be ordered separately

- 52400 P3801 Piston with Ring
- 52402 Nose Piece
- 52404 Base Plate

For additional spare parts please reference the tool manual or Powers' Buyers Guide.

ACCESSORIES

- 52041 6' Smacker Pole Tool (Universal Bump Tool)
- 50065 Standard 6' Pole Tool (Trigger Style)
- 50066 Standard 8' Pole Tool (Trigger Style)

STUDS



THREADED STUDS SIZES

1/4" -20 THREADED STUDS

CAT. NO.	THREAD LENGTH	SHANK LENGTH	SHANK DIA.	STD. BOX	STD. CTN.
50320	1/2"	1/2" (K)	.145	100	5,000
50322	3/4"	1/2" (K)	.145	100	1,000
50326	3/4"	3/4"	.145	100	1,000
50328	1/2"	1"	.145	100	1,000
50330	3/4"	1"	.145	100	1,000
50334	1/2"	1-1/4"	.145	100	1,000
50336	3/4"	1-1/4"	.145	100	1,000

3/8" -16 THREADED STUDS

CAT. NO.	THREAD LENGTH	SHANK LENGTH	SHANK DIA.	STD. BOX	STD. CTN.
50340	1-1/4"	3/4" (K)	.205	100	1,000
50342	1-1/4"	1"	.205	100	1,000
50344	1-1/4"	1-1/4"	.205	100	1,000

(K) - knurled

LOADS



.27 CALIBER SINGLE LOADS FOR POWERS P3801, HILTI® DX400

CAT. NO.	STD. DESCRIPTION	STD. BOX	STD. CTN.	MASTER CTN.
50588	Red, .27 single	100	5,000	20,000
50590	Purple, .27 single	100	5,000	20,000

.27 CALIBER LONG LOADS FOR POWERS P3801, RAMSET® MD380 AND HILTI® DX600N

CAT. NO.	DESCRIPTION	STD. BOX	STD. CTN.	MASTER CTN.
50608	Green, .27 long	100	2,500	10,000
50610	Yellow, .27 long	100	2,500	10,000
50612	Red, .27 long	100	2,500	10,000
50614	Purple, .27 long	100	2,500	10,000

PINS



10MM HEAD DRIVE PINS

CAT. NO.	SHANK LENGTH	HEAD DIA.	SHANK DIA.	STD. BOX	STD. CTN.
50850	27mm - 1"	10mm	.177	100	5,000
50852	32mm -1-1/4"	10mm	.177	100	5,000
50854	42mm -1-5/8"	10mm	.177	100	5,000
50856	52mm -2"	10mm	.177	100	5,000
50858	62mm -2-1/2"	10mm	.177	100	1,000
50860	72mm -2-7/8"	10mm	.177	100	1,000
50862	82mm -3-1/4"	10mm	.177	100	1,000



DRIVE PIN SIZES

3/8" HEAD DIAMETER DRIVE PINS

CAT. NO.	SHANK LENGTH	SHANK DIA.	STD. BOX	STD. CTN.
50162	1"	.171	100	1,000
50164	1-1/4"	.171	100	1,000
50166	1-1/2"	.171	100	1,000
50170	2"	.171	100	1,000
50172	2-1/2"	.171	100	1,000
50174	3"	.171	100	1,000
50176	3-1/8"	.216/.188	100	1,000

(w/step shank)



**FULLY AUTOMATIC
POWER ADJUSTABLE**

- .27 Caliber
- 10 Fastener Magazine
- 1-5/8" Pin Capacity

PA351

Lightweight, heavy duty fully automatic powder actuated tool with 10 pin strip fastener magazine for high volume applications. This tool fastens up to 700 nails per hour for increased productivity. Easy drop in magazine for one handed operation. A power adjuster provides variable load level choices and the tool automatically cycles the load.

APPLICATIONS

- Reliable and Compact for Short Pin Applications
- Commercial / Residential Construction
- Conduit Clip to Concrete
- Electrical Fixture to Concrete
- Electrical Fixture to Steel
- Wood to Concrete
- Wood to Steel
- Track to Floor

LOADS



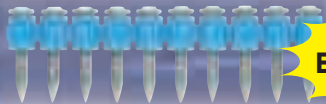
.27 CALIBER SAFETY STRIP® FOR POWERS P3500 / PA3500, PA351, RAMSET® SA270, VIPER, HILTI® DX350, DX351, DX36M, AND DX451

CAT. NO.	DESCRIPTION	STD. BOX	STD. CTN.
50620	Brown, .27 safety strip	100	1,000
50622	Green, .27 safety strip	100	1,000
50626	Yellow, .27 safety strip	100	1,000
50630	Red, .27 safety strip	100	1,000

.27 CALIBER SAFETY STRIP LOADS - MASTER PACK

50624	Green, .27 safety strip	1,000	10,000
50628	Yellow, .27 safety strip	1,000	10,000
50632	Red, .27 safety strip	1,000	10,000

PINS



**Strip Design
Eliminates Jams!**

PA351 PINS (ALSO FITS DX350 AND DX460)

8MM HEAD DIAMETER DRIVE PINS

CAT. NO.	SHANK LENGTH	SHANK DIA.	STD. BOX	STD. CTN.
50240	5/8" (16mm) (K)	.145	500	2,500
50242	3/4" (19mm) (K)	.145	500	2,500
50244	3/4" (19mm) (K)	.145	500	2,500
50246	7/8" (22mm) (K)	.145	500	2,500
50248	1" (27mm) (K)	.145	500	2,500
50250	1-1/4" (32mm) (K)	.145	500	2,500
50252	1-1/2" (37mm) (K)	.145	500	2,500
50254	1-5/8" (42mm) (K)	.145	500	2,500



8MM HEAD COLLATED SPIRAL CSI DRIVE PINS

FOR CONCRETE, STEEL AND I-BEAMS (COMPETES WITH XU PINS)

CAT. NO.	SHANK LENGTH	HEAD DIA.	SHANK DIA.	STD. BOX	STD. CTN.
50450	5/8" (16mm) (K)	8mm	.157	500	2,500
50452	3/4" (19mm) (K)	8mm	.157	500	2,500
50454	7/8" (22mm) (K)	8mm	.157	500	2,500
50456	1" (27mm) (K)	8mm	.157	500	2,500
50458	1-1/4" (32mm) (K)	8mm	.157	500	2,500
50460	1-1/2" (37mm) (K)	8mm	.157	500	2,500
50461	1-5/8" (42mm) (K)	8mm	.157	500	2,500

(K) - knurled



Tool Kit Cat. No. 50266

TOOL KIT INCLUDES

- Safety Glasses, Disposable Ear Plugs
- Allen Wrenches, Wire Brushes, Tool Lubricant
- Spall Guard, Spare Parts
- Pin Starter Kit
- † .300 Head 10 Fastener Magazine: (50) 3/4", (50) 1", (50) 1-1/2"

ACCESSORIES

- 52041 6' Smacker Pole Tool (Universal Bump Tool)
- 50065 Standard 6' Pole Tool (Trigger Style)
- 50066 Standard 8' Pole Tool (Trigger Style)

REPLACEMENT PARTS (1 EACH)

Can be ordered separately

- 52133 PA351 Piston with Ring
- 52137 Base Plate 2/S-13
- 52135 Guide 2/F-3
- 52141 Magazine

For additional spare parts please reference the tool manual or Powers' Buyers Guide.



HEAVY DUTY

- .27 Caliber
- 10 Load Strip
- 3" Pin Capacity

P3600

The P3600 is a low velocity, semi-automatic .27 caliber tool which can be used to install 3/8" head drive pins, 10mm head drive pins and 1/4"-20 or 3/8" - 16 threaded studs, up to 3" in total length. The P3600 is designed for high speed, durability and repetitive volume applications.

APPLICATIONS

- Threaded Studs to Concrete
- Wood to Concrete
- Metal Track to Concrete
- Electrical Fixture to Concrete
 - Electrical Fixture to Steel
- Concrete Forming
 - Commercial / Residential Construction



Tool Kit Cat. No. 52010

TOOL KIT INCLUDES

- Safety Glasses, Disposable Ear Plugs
- Allen Wrenches, Wire Brushes, Tool Lubricant
- Spall Guard, Spare Parts
- Pin Starter Kit
 - † 10mm Headed Pins: (15) 1", (15) 1-5/8", (15) 2"

REPLACEMENT PARTS (1 EA.)

Can be ordered separately

52578 Piston Ring

For additional spare parts please reference the tool manual or Powers' Buyers Guide.

ACCESSORIES

52041 6' Smacker Pole Tool (Universal Bump Tool)

50065 Standard 6' Pole Tool (Trigger Style)

50066 Standard 8' Pole Tool (Trigger Style)

PINS



10MM HEAD DRIVE PINS FOR CONCRETE

CAT. NO.	SHANK LENGTH	HEAD DIA.	SHANK DIA.	STD. BOX	STD. CTN.
50846	19mm - 3/4"	10mm	.177	100	5,000
50848	22mm - 7/8"	10mm	.177	100	5,000
50850	27mm - 1"	10mm	.177	100	5,000
50852	32mm - 1-1/4"	10mm	.177	100	5,000
50854	42mm - 1-5/8"	10mm	.177	100	5,000
50856	52mm - 2"	10mm	.177	100	5,000
50858	62mm - 2-1/2"	10mm	.177	100	5,000
50860	72mm - 2-7/8"	10mm	.177	100	5,000
50862	82mm - 3-1/4"	10mm	.177	100	5,000



DRIVE PIN SIZES

3/8" HEAD DIAMETER DRIVE PINS

CAT. NO.	SHANK LENGTH	SHANK DIA.	STD. BOX	STD. CTN.
50162	1"	.171	100	1,000
50164	1-1/4"	.171	100	1,000
50166	1-1/2"	.171	100	1,000
50170	2"	.171	100	1,000
50172	2-1/2"	.171	100	1,000
50174	3"	.171	100	1,000

STUDS



THREADED STUDS SIZES

1/4" -20 THREADED STUDS					
CAT. NO.	THREAD LENGTH	SHANK LENGTH	SHANK DIA.	STD. BOX	STD. CTN.
50320	1/2"	1/2" (K)	.145	100	5,000
50322	3/4"	1/2" (K)	.145	100	5,000
50326	3/4"	3/4"	.145	100	5,000
50328	1/2"	1"	.145	100	5,000
50330	3/4"	1"	.145	100	5,000
50334	1/2"	1-1/4"	.145	100	5,000
50336	3/4"	1-1/4"	.145	100	5,000

3/8" -16 THREADED STUDS					
CAT. NO.	THREAD LENGTH	SHANK LENGTH	SHANK DIA.	STD. BOX	STD. CTN.
50340	1-1/4"	3/4" (K)	.205	100	1,000
50342	1-1/4"	1"	.205	100	1,000
50344	1-1/4"	1-1/4"	.205	100	1,000

(K) - knurled

LOADS



.27 CALIBER SAFETY STRIP® FOR POWERS P3500, P3600, PA3500, PA351, RAMSET® SA270, VIPER, HILTI® DX350, DX351, DX36M, AND DX451

CAT. NO.	DESCRIPTION	STD. BOX	STD. CTN.
50620	Brown, .27 safety strip	100	1,000
50622	Green, .27 safety strip	100	1,000
50626	Yellow, .27 safety strip	100	1,000
50630	Red, .27 safety strip	100	1,000
.27 CALIBER SAFETY STRIP LOADS - MASTER PACK			
50624	Green, .27 safety strip	1,000	10,000
50628	Yellow, .27 safety strip	1,000	10,000
50632	Red, .27 safety strip	1,000	10,000
50606	Purple, .27 strip	1,000	10,000

P-60

The P-60 is a low velocity, powder actuated tool that uses .25 caliber, 10 shot circular disc loads, and is specifically designed for .300 head pin applications into concrete or steel. Shoots a 2-3/8" pin, 2-1/2" pin with washer or threaded stud 1/4"-20 up to 1".

HEAVY DUTY

- .25 Caliber
- 10 Load Disc
- 2-3/8" Pin Capacity



FEATURES & BENEFITS

- Adjustable Power-one load level for multiple applications
- Tough body construction resists heat transfer
- Resilient handle absorbs recoil
- Cycle tool to advance the load

NEW
Product



Tool Kit Cat. No. 52057

TOOL KIT INCLUDES

- P-60 Tool
- Safety Glasses
- Wire Brushes
- Tool Lubricant



PINS



DRIVE PIN SIZES

.300 HEAD DIAMETER DRIVE PINS

CAT. NO.	SHANK LENGTH	HEAD DIAMETER	SHANK DIA.	STD. BOX	STD. CTN.
50042	2-3/8"	.300	.145	100	1,000
50098	2-1/2"	.300	.145	100	1,000

STUDS



THREADED STUDS SIZES

1/4" -20 THREADED STUDS

CAT. NO.	THREAD LENGTH	SHANK LENGTH	SHANK DIA.	STD. BOX	STD. CTN.
50320	1/2"	1/2" (K)	.145	100	5,000
50322	3/4"	1/2" (K)	.145	100	5,000
50326	3/4"	3/4"	.145	100	5,000
50328	1/2"	1"	.145	100	5,000
50330	3/4"	1"	.145	100	5,000

LOADS



.25 CALIBER DISK LOADS

CAT. NO.	DESCRIPTION	STD. BOX	STD. CTN.
50530*	Gray, .25 disk	100	1,000
50532	Brown, .25 disk	100	1,000
50534	Green, .25 disk	100	1,000
50536	Yellow, .25 disk	100	1,000
50538	Red, .25 disk	100	1,000

*While supplies last



NEW
Product

Sniper™ Pole Tool

The Sniper™ Pole Tool is ideally suited to installing overhead ceiling clips with a 1-1/2" pin. It features high production bump-and-move firing plus a 10 load strip. The Sniper also features Safety Sequence Strip Loading, allowing load advancement only after the pin has been installed in the nose piece, and the handle must be clicked to advance the next load.

Sniper can reach 8 feet in length!

Barrel retention collar designed for easy assembly and disassembly for cleaning and lubrication

Knurled screw-in connector attaches quickly and securely to extension pole

Sniper accommodates a 10 load strip, to keep you moving faster

THE SNIPER POLE TOOL (BUMP TOOL)

CAT. NO.	DESCRIPTION	STD. BOX
52051	Sniper Tool (Bump Tool)	1
52053	6 ft. Pole	1
52061	8 ft. Pole	1

Powder Actuated Pole Tools

Take your powder actuated tools to new heights with the new adjustable extension system called the Smacker. Smacker's center pole section is 6 feet in length, and additional 3 foot extensions can be added up to a total of 12 feet. It features high production bump-and-move firing. The universal cradle accommodates five different Powers' tools and can be changed quickly and easily.

Powers Pole Tool fits four powder actuated models, and is activated by a squeeze trigger. The tool comes in two convenient sizes.

Fits the following Powers tools:

Fits the following Powers tools:



P3500

PA3500

P3500

PA3500

P35s

P3600

P35s

P3600

PA351

6' SMAKER POLE TOOL (BUMP TOOL)		
CAT. NO.	DESCRIPTION	STD. BOX
52041	6 ft. Pole (Bump Tool)	1
52045	3 ft. Smacker Pole Extension	1

POLE TOOL		
CAT. NO.	DESCRIPTION	STD. BOX
50065	6 ft. Pole Tool	1
50066	8 ft. Pole Tool	1

Merchandising

Merchandisers can act like a round-the-clock salesman in your facility. Our powder actuated display can be loaded with the specific mix of product best suited to your needs, and will keep them organized, neat and readily available.



This custom Merchandiser displays sample powder actuated tools for the customer's inspection.

MERCHANDISING DISPLAY

CAT. NO.	DESCRIPTION	STD. BOX
49114	Powder Display Rack	1

8MM Pins, Specialty Fasteners, Assemblies and Powder Loads



CEILING CLIP ASSEMBLIES

.300 DIAMETER HEAD PINS WITH CEILING CLIPS

CAT. NO.	SHANK LENGTH	SHANK DIA.	WIRE HOLE	STD. BOX	STD. CTN.
50363**	1"	.145	0.278"	100	1,000
50364	1"	.145	0.278"	100	1,000
50368	1"	.145	0.278"	100	1,000
50370	1-1/4"	.145	0.278"	100	1,000
50374*	1-1/4"	.145	0.278"	100	1,000

*Economy Clip **No Dome

8MM DRIVE HEAD PINS WITH CEILING CLIPS

CAT. NO.	DESCRIPTION SHANK LENGTH	SHANK DIA.	WIRE HOLE	STD. BOX	STD. CTN.
50272	27mm w/CC	.145	0.278"	100	1,000
50274	32mm w/CC	.145	0.278"	100	1,000



8MM DIAMETER HEAD DRIVE PIN WITH CEILING CLIP FOR HARD AGGREGATE CONCRETE

CAT. NO.	SHANK LENGTH	SHANK DIA.	WIRE HOLE	STD. BOX	STD. CTN.
50206	1-1/4"	100	1,000	.177"	0.278"

.300 DIAMETER PRE-ASSEMBLED PIN AND CLIP FOR LADD TOOL

CAT. NO.	DESCRIPTION	SHANK DIA.	WIRE HOLE	STD. BOX	STD. CTN.
50438	Pre-assembled Pin & Clip (Ladd)	100	1,000	.155	0.278"



BX AND CONDUIT CLIP ASSEMBLIES

.300 DIAMETER HEAD DRIVE PINS WITH BX CABLE STRAPS

CAT. NO.	DESCRIPTION	SHANK DIA.	STD. BOX	STD. CTN.
50150	1"	.145	100	1,000
50152	1-1/4"	.145	100	1,000

.300 DIAMETER HEAD DRIVE PINS WITH CONDUIT CLIPS

CAT. NO.	DESCRIPTION	STD. BOX	STD. CTN.	SHANK DIA.
50380	1/2" EMT 1-1/4"	.145	100	1,000
50381*	1/2" EMT 1" pin	.145	100	1,000
50382	1/2" EMT 1" pin	.145	100	1,000
50384	3/4" EMT 1-1/4"	.145	100	1,000
50386	3/4" EMT 1" pin	.145	100	1,000
50388	1" EMT 1" pin	.145	25	250

* With Top Hat

8MM DIAMETER HEAD DRIVE PINS WITH CONDUIT CLIPS

CAT. NO.	DESCRIPTION	SHANK DIA.	STD. BOX	STD. CTN.
50276	27mm with 1/2" EMT	.145	100	1,000
50278	27mm with 3/4" EMT	.145	100	500
50280	27mm with 1" EMT	.145	25	250

BALLISTIC POINT DRIVE PIN WITH CEILING CLIP

CAT. NO.	DESCRIPTION	HEAD DIA.	SHANK DIA.	STD. BOX	STD. CTN.
50058	1-1/4" with ceiling clip	.300	.181/.150	100	1,000



8MM DIAMETER HEAD PINS WITH ROD HANGER CLIP

CAT. NO.	DESCRIPTION	SHANK DIA.	STD. BOX	STD. CTN.
50219	32mm (1-1/4") pin with 1/4 - 20 rod hanger	.145	100	1,000
50221	32mm (1-1/4") pin with 3/8 - 16 rod hanger	.145	100	1,000



REBAR BASKET ASSEMBLIES

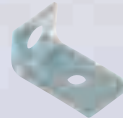
8MM DIAMETER HEAD DRIVE PINS WITH REBAR BASKET CLIP

CAT. NO.	DESCRIPTION	SHANK DIA.	STD. BOX	STD. CTN.
50702	32mm w/ basket clip	.145	100	100
50704	37mm w/ basket clip	.145	100	100
50710	47mm w/ basket clip	.145	100	100
50712	52mm w/ basket clip	.145	100	100
50716	62mm w/ basket clip	.145	100	100
50718	72mm w/ basket clip	.145	100	100



FORMING PINS

CAT. NO.	SHANK LENGTH	HEAD DIA.	SHANK DIA.	STD. BOX	STD. CTN.
50789	44mm - 1-3/4"	.205	.145	100	1,000
50790	62mm - 2-1/2"	.205	.145	100	1,000



FASTENER ACCESSORIES

CAT. NO.	DESCRIPTION	STD. BOX	STD. CTN.
50400	Ceiling Clip (no pin) 9/32" and 5/16" holes	100	1,000
50439	LADD Clip - No pin	100	1,000
50365	Domed Ceiling Clip - No pin	100	1,000



8MM Pins, Specialty Fasteners, Assemblies and Powder Loads

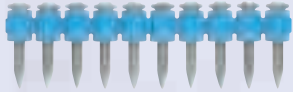


8MM HEAD COLLATED SPIRAL CSI DRIVE PINS

FOR CONCRETE, STEEL AND I-BEAMS (COMPETES WITH XU PINS)

CAT. NO.	SHANK LENGTH	HEAD DIA.	SHANK DIA.	STD. BOX	STD. CTN.
50450	5/8" (16mm) (K)	8mm	.157	500	2,500
50452	3/4" (19mm) (K)	8mm	.157	500	2,500
50454	7/8" (22mm) (K)	8mm	.157	500	2,500
50456	1" (27mm) (K)	8mm	.157	500	2,500
50458	1-1/4" (32mm) (K)	8mm	.157	500	2,500
50460	1-1/2" (37mm) (K)	8mm	.157	500	2,500
50461	1-5/8" (42mm) (K)	8mm	.157	500	2,500

(K) - knurled



8MM HEAD COLLATED DRIVE PINS FOR THE DX460

10 FASTENER MAGAZINE

CAT. NO.	SHANK LENGTH (INCHES)	SHANK LENGTH (MM)	SHANK DIA.	STD. BOX	STD. CTN.
50250	1-7/8"	47	.145	500	2,500
50258	2"	52	.145	500	2,500
50260	2-1/4"	57	.145	500	2,500
50262	2-1/2"	62	.145	500	2,500
50264	2-7/8"	72	.145	500	2,500



.300" HEAD BLUE MAGIC™ DRIVE PINS

CAT. NO.	SHANK LENGTH	SHANK DIA.	STD. BOX	STD. CTN.
56000	1/2"	0.145	100	5,000
56004	3/4"	0.145	100	5,000
56006	1"	0.145	100	5,000
56012	1-1/2"	0.145	100	1,000



BALLISTIC POINT™ DRIVE PINS (POWER POINT TYPE FASTENERS)

.300 DIAMETER BALLISTIC POINT DRIVE PINS (BLACK)

CAT. NO.	SHANK LENGTH	SHANK DIA.	STD. BOX	STD. CTN.
50052	1/2"	.150	100	1,000
50053	5/8"	.150	100	1,000
50054	3/4"	.150	100	1,000
50055	1"	.150	100	1,000

BALLISTIC POINT STEP SHANK DRIVE PINS (BLACK)

CAT. NO.	SHANK LENGTH	SHANK DIA.	STD. BOX	STD. CTN.
50056	1-1/4"	.181/.150	100	1,000
50057	1-1/2"	.181/.150	100	1,000



THREADED STUDS

1/4" -20 THREADED STUDS

CAT. NO.	THREAD LENGTH	SHANK LENGTH	SHANK DIA.	STD. BOX	STD. CTN.
50320	1/2"	1/2" (K)	.145	100	5,000
50322	3/4"	1/2" (K)	.145	100	1,000
50326	3/4"	3/4"	.145	100	1,000
50328	1/2"	1"	.145	100	1,000
50330	3/4"	1"	.145	100	1,000
50334	1/2"	1-1/4"	.145	100	1,000
50336	3/4"	1-1/4"	.145	100	1,000

3/8" -16 THREADED STUDS

CAT. NO.	THREAD LENGTH	SHANK LENGTH	SHANK DIA.	STD. BOX	STD. CTN.
50340	1-1/4"	3/4" (K)	.205	100	1,000
50342	1-1/4"	1"	.205	100	1,000
50344	1-1/4"	1-1/4"	.205	100	1,000



8MM Pins, Specialty Fasteners, Assemblies and Powder Loads



8MM HEAD DRIVE PINS (X-DN TYPE PINS)

8MM HEAD DIAMETER DRIVE PINS				
CAT. NO.	SHANK LENGTH	SHANK DIA.	STD. BOX	STD. CTN.
50180	16mm (K) -5/8"	.145	100	5,000
50182	19mm (K) -3/4"	.145	100	5,000
50184	22mm -7/8"	.145	100	5,000
50186	27mm -1"	.145	100	5,000
50188	32mm -1-1/4"	.145	100	1,000
50190	37mm -1-1/2"	.145	100	1,000
50192	42mm -1-5/8"	.145	100	1,000
50194	47mm -1-7/8"	.145	100	1,000
50196	52mm -2"	.145	100	1,000
50198	57mm -2-1/4"	.145	100	1,000
50200	62mm -2-1/2"	.145	100	1,000
50202	72mm -2-7/8"	.145	100	1,000

8MM DIAMETER HEAD DRIVE PINS WITH TOP HAT

CAT. NO.	SHANK LENGTH	SHANK DIA.	STD. BOX	STD. CTN.
50210	16mm (K) -5/8"	.145	100	5,000
50214	22mm -7/8"	.145	100	5,000
50216	27mm -1"	.145	100	5,000

8MM DIAMETER HEAD DRIVE PINS WITH TOP HAT

CAT. NO.	SHANK LENGTH	SHANK DIA.	STD. BOX	STD. CTN.
51700	16mm (K) Top Hat	.145	1,000	5,000
51750	22mm Top Hat	.145	1,000	5,000

8MM HEAD DIAMETER DRIVE PINS WITH 1" WASHER

CAT. NO.	SHANK LENGTH	SHANK DIA.	STD. BOX	STD. CTN.
50220	27mm -1"	.145	100	1,000
50222	32mm -1-1/4"	.145	100	1,000
50224	37mm -1-1/2"	.145	100	1,000
50226	52mm -2"	.145	100	1,000
50228	62mm -2-1/2"	.145	100	1,000
50230	72mm -2-7/8"	.145	100	1,000

(K) - knurled



HAMMER DRIVE® PINS (NO POWDER LOADS REQUIRED)

PRODUCT DESCRIPTION

Hammer Drive pins are designed for permanently fastening a fixture to concrete and some types of masonry. This fastener is designed for use in a standard hand tool and should not be used in a powder actuated tool. The pins are formed with a 1/4" diameter head on one end and a 0.140" diameter shank in various lengths. A 3/8" diameter steel washer is mounted over the point to retain the drive pin in the fastener guide of the tool providing guidance during the driving operation. This fastener is recommended for light duty static load applications where holding power is not a critical factor. It should not be used overhead.

Federal Specification - Meets the descriptive requirements of FF-P-395 C (superseded).

1/4" HEAD DIAMETER HAMMER DRIVE PINS

CAT. NO.	SHANK LENGTH	SHANK DIA.	STD. BOX	STD. CTN.
50294	3/4"	.140	100	1,000
50296	1"	.140	100	1,000
50298	1-1/4"	.140	100	1,000
50300	1-1/2"	.140	100	1,000
50302	2"	.140	100	1,000
50304	2-1/2"	.140	100	1,000
50306	3"	.140	100	1,000

HAMMER DRIVE SETTING TOOL

CAT. NO.	DESCRIPTION	STD. BOX	STD. CTN.
50310	Hammer Drive Tool - Standard	1	1



.22 CALIBER LOADS FOR LADD CEILING MASTER TOOL (L1600)

CAT. NO.	DESCRIPTION	STD. BOX	STD. CTN.	MASTER CTN.
50514	Green - Ladd	100	5,000	20,000
50516	Yellow - Ladd	100	5,000	20,000
50518	Red - Ladd	100	5,000	20,000



.25 CALIBER DISK LOADS FOR RAMSET® D45, D60, D60L

CAT. NO.	DESCRIPTION	STD. BOX	STD. CTN.	MASTER CTN.
50530	Gray, .25 disk	100	1,000	1,000
50532	Brown, .25 disk	100	1,000	1,000
50534	Green, .25 disk	100	1,000	1,000
50536	Yellow, .25 disk	100	1,000	1,000

.25 CALIBER RED DISK LOADS FOR RAMSET® MODEL D45

50538	Red, .25 disk	100	1,000	1,000
-------	---------------	-----	-------	-------



.25 CALIBER SINGLE LOADS FOR HILTI® DX100, DX200

CAT. NO.	DESCRIPTION	STD. BOX	STD. CTN.	MASTER CTN.
50560	Green, .25 single	100	5,000	20,000
50562	Yellow, .25 single	100	5,000	20,000
50564	Red, .25 single	100	5,000	20,000
50566	Purple, .25 single	100	5,000	20,000



.27 CALIBER 10 LOAD STRIPS FOR P3600 AND MODEL DX 451, DX 40, DX A41

CAT. NO.	DESCRIPTION	STD. BOX	STD. CTN.	MASTER CTN.
50606	Purple, .27 strip	100	1,000	20,000



Powder Actuated Fasteners Performance Data - Ultimate Loads

ULTIMATE LOADS IN NORMAL WEIGHT CONCRETE

DESCRIPTION	EMBED. DEPTH (IN)	2000 PSI CONCRETE		3000 PSI CONCRETE		4000 PSI CONCRETE		5,000 PSI CONCRETE	
		TENSION (LBS.)	SHEAR (LBS.)	TENSION (LBS.)	SHEAR (LBS.)	TENSION (LBS.)	SHEAR (LBS.)	TENSION (LBS.)	SHEAR (LBS.)
Ballistic Point Pin (0.150" Shank)	5/8	370	590	610	810	610	800	590	780
	3/4	480	770	660	940	680	980	700	1,020
	1	690	1,130	770	1,200	820	1,350	870	1,500
	1-1/4	810	1,460	1,130	1,490	1,380	1,680	1,620	1,890
.300 Head Drive Pin	1-1/2	920	1,780	1,490	1,780	1,930	2,020	2,370	2,250
	5/8	370	590	610	810	610	800	590	780
8mm Head Drive Pin	3/4	480	770	660	940	680	980	700	1,020
	1/4-20 Threaded Stud (0.145" Shank)	1	690	1,130	770	1,200	820	1,350	870
	1-1/4	810	1,460	1,130	1,490	1,380	1,680	1,620	1,890
	1-1/2	920	1,780	1,490	1,780	1,930	2,020	2,370	2,250
3/8 Head Drive Pin (0.171" Shank)	1-1/4	930	1,780	1,160	2,120	1,310	2,120	1,600	2,120
	1-1/2	1,470	2,540	2,040	2,540	2,040	2,540	2,040	2,540
3/8-16 Threaded Stud (0.205" Shank)	1	770	1,250	990	1,320	1,300	1,700	1,300	1,700
	1-1/4	1,340	2,090	1,340	2,170	1,690	2,560	1,690	2,560
	1-3/8	1,840	2,210	2,190	2,590	2,340	3,150	2,340	3,150

Ceiling Clips - Standard (0.145" Shank)	3/4	320	600	500	600	525	975	540	1,170
	1	410	960	670	990	700	1,180	720	1,280

Ceiling Clips - Economy (0.145" Shank)	3/4	250	610	330	760	520	1,030	570	1,170
	1	440	960	440	1,190	690	1,195	820	1,200

Ceiling Clips - Ladd Pin (0.152" Shank)	1-1/8	630	810	750	1,100	955	1,225	1,060	1,290
--	-------	-----	-----	-----	-------	-----	-------	-------	-------

ULTIMATE LOADS IN LIGHTWEIGHT CONCRETE

DESCRIPTION	EMBED. DEPTH (IN)	3000 PSI		3000 PSI LTWT. CONCRETE OVER DECK		3500 PSI		3500 PSI LTWT. CONCRETE OVER DECK	
		LTWT. CONCRETE TENSION (LBS.)	SHEAR (LBS.)	TENSION (LBS.)	SHEAR (LBS.)	LTWT. CONCRETE TENSION (LBS.)	SHEAR (LBS.)	LTWT. CONCRETE TENSION (LBS.)	SHEAR (LBS.)
Ballistic Point Pin (0.150" Shank)	3/4	560	600	350	1,310	600	650	380	1,410
	1	570	1,000	550	1,350	610	1,080	590	1,460
	1-1/4	810	1,220	700	1,380	870	1,320	760	1,490
	1-1/2	1,040	1,440	840	1,400	1,120	1,560	920	1,510
.300 Head Drive Pin	3/4	560	600	350	1,310	600	650	380	1,410
	1	570	1,000	550	1,350	610	1,080	590	1,460
8mm Head Drive Pin	1-1/4	810	1,220	700	1,380	870	1,320	760	1,490
	1-1/2	1,040	1,440	840	1,400	1,120	1,560	920	1,510
1/4-20 Threaded Stud (0.145" Shank)	1-1/4	810	1,220	700	1,380	870	1,320	760	1,490
	1-1/2	1,040	1,440	840	1,400	1,120	1,560	920	1,510
3/8 Head Drive Pin (0.171" Shank)	1-1/4	650	1,540	620	1,830	700	1,660	670	1,980
	1-1/2	1,210	1,620	860	1,930	1,310	1,750	930	2,090
3/8-16 Threaded Stud (0.205" Shank)	1	910	1,250	530	1,310	980	1,350	570	1,420
	1-1/4	1,350	2,110	670	1,810	1,460	2,280	720	1,960

Ceiling Clips - Standard (0.145" Shank)	3/4	410	440	270	980	440	480	300	1,060
	1	480	790	360	980	520	850	390	1,060

Ceiling Clips - Economy (0.145" Shank)	3/4	280	440	270	1,060	300	480	300	1,140
	1	420	940	460	1,060	460	1,020	500	1,140

Ceiling Clips - Ladd Pin (0.152" Shank)	1-1/8	730	1,130	440	1,000	790	1,220	480	1,080
--	-------	-----	-------	-----	-------	-----	-------	-----	-------

ULTIMATE LOADS - SILL PLATES IN NORMAL WEIGHT CONCRETE

DESCRIPTION	EMBED. DEPTH (IN)	TENSION (LBS.)	2000 PSI CONCRETE OR GREATER SHEAR PERPENDICULAR TO CONCRETE EDGE (LBS.)	SHEAR (LBS.)
Ballistic Point Pin (0.150" Shank)	1-1/2	1,010	1,060	1,200
.300 Head Drive Pin	1-1/2	1,010	1,060	1,200
8mm Head Drive Pin (0.145" Shank)				
3/8" Head Drive Pin (0.171" Shank)	1-1/2	940	960	1,150

ULTIMATE LOADS IN CONCRETE MASONRY UNITS

DESCRIPTION	EMBED. DEPTH (IN)	HOLLOW CMU				GROUT FILLED CMU			
		UNIT FACE TENSION (LBS.)	UNIT FACE SHEAR (LBS.)	MORTAR JOINT TENSION (LBS.)	MORTAR JOINT SHEAR (LBS.)	UNIT FACE TENSION (LBS.)	UNIT FACE SHEAR (LBS.)	MORTAR JOINT TENSION (LBS.)	MORTAR JOINT SHEAR (LBS.)
Ballistic Point Pin (0.150" Shank)	1	320	740	-	-	570	900	510	960
.300 Head Drive Pin									
8mm Head Drive Pin (0.145" Shank)	1	320	740	-	-	570	900	510	960
1/4-20 Threaded Stud (0.171" Shank)	1	-	-	-	-	740	850	-	-
3/8-16 Threaded Stud (0.205" Shank)	1	160	670	-	-	860	1,460	1,060	1,030

ULTIMATE LOADS IN A36 STEEL

DESCRIPTION	SHANK TYPE	1/8" STEEL		3/16" STEEL		1/4" STEEL		3/8" STEEL	
		TENSION (LBS.)	SHEAR (LBS.)	TENSION (LBS.)	SHEAR (LBS.)	TENSION (LBS.)	SHEAR (LBS.)	TENSION (LBS.)	SHEAR (LBS.)
Ballistic Point Pin (0.150" Shank)	Smooth	590	2,090	910	3,030	1,310	3,030	2,410	2,620
	Knurled	1,100	990	1,630	1,370	2,160	1,750	2,160	1,750
.300 Head Drive Pin	Smooth	590	2,090	910	3,030	1,310	3,030	2,410	2,620
	Knurled	1,100	2,230	1,630	2,770	2,160	3,300	2,560	3,760
8mm Head Drive Pin (0.145" Shank)	Smooth	950	2,700	1,490	3,700	1,820	3,890	3,020	4,230
	Knurled	1,120	2,770	2,700	5,460	3,730	8,090	-	-
3/8 Head Drive Pin (0.171" Shank)	Smooth	1,030	1,190	1,090	1,190	1,090	1,190	1,090	1,190
	Knurled	950	1,290	1,090	1,290	1,090	1,290	1,090	1,290
3/8-16 Thrd Stud (0.205" Shank)	Smooth	1,180	1,200	1,180	1,200	1,180	1,200	1,180	1,200
	Knurled	1,180	1,200	1,180	1,200	1,180	1,200	1,180	1,200

HAMMER DRIVE PINS ULTIMATE LOADS IN CONCRETE AND BLOCK

	PIN SIZE	EMBED. DEPTH	3,000 PSI CONCRETE	4,000 PSI CONCRETE	CONCRETE BLOCK
Tension Load (lbs.)	1/4"	1/2"	415	465	380
	1/4"	3/4"	610	610	490
Shear	1/4"	1/2"	450	480	395
	1/4"	3/4"	650	650	520

NOTE: The values listed above are ultimate load capacities which should be reduced by a minimum safety factor of 5.0 or greater to determine the allowable working load.



Powder Actuated Fasteners Performance Data - Allowable Loads

ALLOWABLE LOADS IN NORMAL WEIGHT CONCRETE

DESCRIPTION	EMBED. DEPTH (IN)	2000 PSI CONCRETE		3000 PSI CONCRETE		4000 PSI CONCRETE		5,000 PSI CONCRETE	
		TENSION (LBS.)	SHEAR (LBS.)	TENSION (LBS.)	SHEAR (LBS.)	TENSION (LBS.)	SHEAR (LBS.)	TENSION (LBS.)	SHEAR (LBS.)
Ballistic Point Pin (0.150" Shank)	5/8	45	75	75	100	75	100	75	100
	3/4	60	95	85	120	85	125	90	130
	1	85	140	95	150	105	170	110	190
	1-1/4	100	185	140	185	175	210	205	240
.300 Head Drive Pin	1-1/2	115	225	185	225	240	255	295	280
	5/8	45	75	75	100	75	100	75	100
8mm Head Drive Pin	3/4	60	95	85	120	85	125	90	130
	1	85	140	95	150	105	170	110	190
1/4-20 Thrd Stud (0.145" Shank)	1-1/4	100	185	140	185	175	210	205	240
	1-1/2	115	225	185	225	240	255	295	280
3/8" Head Drive Pin (0.171" Shank)	1-1/4	110	220	145	265	165	265	200	265
	1-1/2	185	320	255	320	255	320	255	320
3/8-16 Thrd Stud (0.205" Shank)	1	95	155	125	165	165	215	165	215
	1-1/4	170	260	170	270	210	320	210	320
	1-3/8	230	275	275	325	290	395	290	395
Ceiling Clips - Std (0.145" Shank)	3/4	40	75	65	75	65	120	70	145
	1	50	120	85	125	90	150	90	160
Ceiling Clips - Econ. (0.145" Shank)	3/4	30	75	40	95	65	130	70	145
	1	55	120	55	150	85	150	105	150
Ceiling Clips - Ladd Pin (0.152" Shank)	1-1/8	80	100	95	140	120	155	135	160

ALLOWABLE LOADS IN LIGHTWEIGHT CONCRETE

DESCRIPTION	EMBED. DEPTH (IN)	3000 PSI LW. CONCRETE		3000 PSI LW. CONCRETE OVER 20 G DECK		3500 PSI LW. CONCRETE		3500 PSI LW. CONCRETE OVER 20 G DECK	
		TENSION (LBS.)	SHEAR (LBS.)	TENSION (LBS.)	SHEAR (LBS.)	TENSION (LBS.)	SHEAR (LBS.)	TENSION (LBS.)	SHEAR (LBS.)
Ballistic Point Pin (0.150" Shank)	3/4	60	75	45	160	70	80	50	175
	1	70	125	70	165	75	135	75	180
	1-1/4	100	155	85	170	110	165	95	185
	1-1/2	130	180	105	175	140	195	115	190
.300 Head Drive Pin	3/4	60	75	45	160	70	80	50	175
8mm Head Drive Pin	1	70	125	70	165	75	135	75	180
1/4-20 Threaded Stud (0.145" Shank)	1-1/4	100	155	85	170	110	165	95	185
	1-1/2	130	180	105	175	140	195	115	190
3/8" Head Drive Pin (0.171" Shank)	1-1/4	80	195	80	230	90	210	85	250
	1-1/2	150	205	110	240	165	220	115	260
3/8-16 Threaded Stud (0.205" Shank)	1	115	155	65	165	125	170	70	180
	1-1/4	170	265	85	225	185	285	90	245
Ceiling Clips - Standard (0.145" Shank)	3/4	50	55	35	125	55	60	40	135
	1	60	100	45	125	65	105	50	135
Ceiling Clips - Economy (0.145" Shank)	3/4	35	55	35	135	40	60	40	145
	1	55	120	60	135	60	130	65	145
Ceiling Clips - Ladd Pin (0.152" Shank)	1-1/8	90	140	55	125	100	150	60	135

ALLOWABLE LOADS - SILL PLATES IN NORMAL WEIGHT CONCRETE

DESCRIPTION	EMBED. DEPTH (IN)	2000 PSI CONCRETE OR GREATER		SHEAR PERPENDICULAR TO CONCRETE EDGE (LBS.)	SHEAR (LBS.)
		TENSION (LBS.)	SHEAR (LBS.)		
Ballistic Point Pin (0.150" Shank)	1-1/2	125	135	135	150
	1	85	140	140	190
.300 Head Drive Pin	1-1/2	125	135	135	150
8mm Head Drive Pin (0.145" Shank)	1	85	140	140	190
3/8" Head Drive Pin (0.171" Shank)	1-1/2	120	120	120	145

NOTE: The values listed in the table above for normal weight concrete are based on a minimum safety factor of 8:1 for fasteners installed at a 1-3/4" edge distance through a Douglas Fir 2x member. Use of multiple fasteners is recommended to increase reliability.

ALLOWABLE LOADS IN CONCRETE MASONRY UNITS

DESCRIPTION	EMBED. DEPTH (INCHES)	HOLLOW CMU FACE		MORTAR JOINT		GROUT FILLED CMU FACE		MORTAR JOINT	
		TENSION (LBS.)	SHEAR (LBS.)	TENSION (LBS.)	SHEAR (LBS.)	TENSION (LBS.)	SHEAR (LBS.)	TENSION (LBS.)	SHEAR (LBS.)
Ballistic Point Pin (0.150" Shank)	1	40	95	-	-	70	115	65	120
	1	40	95	-	-	70	115	65	120
8mm Head Drive Pin	1	40	95	-	-	70	115	65	120
1/4-20 Threaded Stud (0.145" Shank)	1	-	-	-	-	95	105	-	-
3/8" Head Drive Pin (0.171" Shank)	1	20	85	-	-	110	185	135	130
3/8-16 Threaded Stud (0.205" Shank)	1	20	85	-	-	110	185	135	130

NOTE: The values listed above are based on a minimum safety factor of 8:1 for fasteners installed in a wall constructed from ASTM C90, Grade N, lightweight block. Values are for the fastener only, connected parts must be investigated separately. Use of multiple fasteners is recommended to increase reliability. Since the consistency of a masonry block wall can vary widely, these values should be used as a guide. Successful fastening into the face shell of Hollow CMU is typically done with the lightest powder load level. Job site tests should be performed to ensure that cracking the face shell does not occur.

ALLOWABLE LOADS IN A36 STEEL

DESCRIPTION	SHANK TYPE	1/8" STEEL		3/16" STEEL		1/4" STEEL		3/8" STEEL	
		TENSION (LBS.)	SHEAR (LBS.)	TENSION (LBS.)	SHEAR (LBS.)	TENSION (LBS.)	SHEAR (LBS.)	TENSION (LBS.)	SHEAR (LBS.)
Ballistic Point Pin (0.150" Shank)	Smooth	120	420	180	605	260	605	480	525
	Knurled	220	200	325	275	430	350	430	350
8mm Head Drive Pin	Smooth	120	420	180	605	260	605	480	525
1/4-20 Thrd Stud (0.145" Shank)	Knurled	220	445	325	555	430	660	510	750
	Smooth	190	540	300	740	365	780	605	845
3/8" Head Drive Pin (0.171" Shank)	Smooth	190	540	300	740	365	780	605	845
3/8-16 Threaded Stud (0.205" Shank)	Knurled	225	555	540	1,090	745	620	-	-
Ceiling Clips - Std (0.145" Shank)	Smooth	205	240	220	240	220	240	220	240
	Smooth	190	260	210	260	210	260	210	260
Ceiling Clips - Ladd (0.152" Shank)	Smooth	235	240	240	240	235	240	235	240

NOTE: The values listed in the tables above are based on a minimum safety factor of 5:1 for fasteners installed with the point completely penetrating the steel. Values are for the fastener only, connected parts must be investigated separately. Use of multiple fasteners is recommended to increase reliability.

POWDER ACTUATED APPROVALS, LISTINGS, AND EVALUATIONS

International Code Council, Evaluation Service (ICC-ES) ER-5330
 City of Los Angeles (COLA) Research Report LARR-25304
 Factory Mutual Research Corporation (FM Approvals) –
 File No. J.I. 3002070 for 3/8" Threaded Studs



POWERS FASTENERS BRANCH INFORMATION

POWERS BRANCH INFORMATION

USA LOCATIONS

CITY	ADDRESS	CONTACT	PHONE	FAX
Alabama	5405 Buford Hwy Suite 410 Norcross, GA 30071-3984	Jeff Hatchett	205-520-6044	678-966-9242
Atlanta	5405 Buford Hwy Suite 410 Norcross, GA 30071-3984	Robert Brito	678-966-0000	678-966-9242
Boston	2 Powers Lane, Brewster, NY 10509	Jack Armour	800-524-3244	914-576-6483
Charlotte	349 L West Tremont Avenue, Charlotte, NC 28203	Bob Aurisy	704-375-5012	704-376-5517
Chicago	2472 Wisconsin Avenue, Downers Grove, IL 60515	Dan Gilligan	630-960-3156	630-960-3912
Dallas	10625 King Williams Drive, Dallas, TX 75220	Kyle Thuenemann	972-506-9258	972-506-9290
Denver	2475 West Second Street #35, Denver, CO 80223	Aaron Minnis	303-922-9202	303-922-9228
Detroit	21600 Wyoming Avenue, Oak Park, MI 48237	Glen Gaskill	248-543-8600	248-543-8601
Florida	9208 Palm River Road, Bldg. 3, Suite 305, Tampa, FL 33619	Mark Mamula	813-626-4500	813-626-4545
Houston	13833 North Promenade, Suite 100, Stafford, TX 77477	Chris Salisbury	281-491-0351	281-491-0367
Indianapolis	15290 Stony Creek Way, Noblesville, IN 46060	Bill Trainor	317-773-1668	317-773-1690
Kansas City / St Louis	716 East 16th Avenue, North Kansas City, MO 64116	Don James, Jr.	816-472-5038	816-472-5040
Los Angeles	2761 Dow Avenue, Tustin, CA 92780	Jack Stewart	714-731-2500	714-731-2566
Maryland	3137-B Pennys Drive, Landover, MD 20785	Chris Van Syckle	301-773-1722	301-341-5119
Milwaukee	12020 W. Feerick Street, Milwaukee, WI 53222	Donn Raduenz	414-466-2400	414-466-3993
Minneapolis	351 Wilson Street, NE Minneapolis, MN 55413	Rick Gruye	612-331-3756	612-331-3549
Nashville/Memphis	221 Blanton Avenue, Nashville, TN 37210	Ira Liss	615-248-2667	615-248-2676
New Orleans	102 Sampson Street, Houston, TX 77003	Cal Zenor	713-228-1524	713-228-1528
New York	2 Powers Lane, Brewster, NY 10509	John Partridge	914-235-6300	914-576-6483
Philadelphia	2 Powers Lane, Brewster, NY 10509	Greg Stephenson	800-524-3244	914-576-6483
Phoenix	3602 E. Southern Ave, Suite 5 Phoenix, AZ 85040	Craig Hering	602-431-8024	602-431-8027
Pittsburgh	1360 Island Avenue, McKees Rocks, PA 15136	Bill Dugan	412-771-3010	412-771-9858
Portland	129 South Kenyon, Seattle, WA 98108	Jim Swink	360-608-6845	206-762-5817
Rochester	40 Harrison Street, Rochester, NY 14605	Mike Kolstad	585-288-2080	585-288-8732
Salt Lake City	2212 SW Temple #20, Salt Lake City, UT 84115	Don Manning	801-466-9428	801-466-3083
San Francisco	28970 Hopkins Street, Suite B+C, Hayward, CA 94545	Dan Mullan	510-293-1500	510-293-1505
Seattle	129 South Kenyon, Seattle, WA 98108	Darin Arnold	206-762-5812	206-762-5817

INTERNATIONAL LOCATIONS

COUNTRY/REGION	ADDRESS	CONTACT	PHONE	FAX
Australia	Factory 3, 205 Abbotts Road, Dandenong, South Victoria 3175	Phil Rose	+61 3 8787 5888	+61 3 8787 5899
Canada	6950 Edwards Blvd. Mississauga, Ontario L5T 2W2	Mark Russell	905-673-7295	905-673-6490
China	Metropolitan Business Centre, East Nandan Road, Lane 300, No. 9, Room 604 Xuhui District, Shanghai, China 200030	Jake Olsen	+86-21-3363-2880	+86-21-3363-2881
China	TriF international, 4E, Building 11, The City of Design, Tianmian Village, Futian, Shenzhen 518000	Tom Nie	86-755-82795378	86-755-82795379
Europe	Westrak 208, 1771 SV Wieringerwerf, Netherlands	Paul Geuvers	+31 888 769 377	+31 227 594 759
India	112, D Wing, Twin Arcade, Military Rd., Andheri, [E] Mumbai, 400059	Ajay Kulkarni	91-22-401591304	
Manitoba	1810 Dublin Avenue Man. Winnipeg, R3H 0H3	Distributor	204-633-0064	204-694-1261
New Zealand	PO Box 302 076 North Harbour Auckland	Claye Sesto	+64 9415 2425	+64 9415 2627
Quebec	721 Meloche Avenue, Dorval, Quebec H9P 2S5	Alan Hill	514-631-4216	514-631-2583
Thailand	80/89 MOO4 Petchakasem Road, Bangkhae Bangkok 10160	Chalee Surakavanichakorn	+661 826 5821	

LATIN & CARIBBEAN DISTRIBUTION INQUIRIES

COUNTRY/REGION	ADDRESS	CONTACT	PHONE	FAX
Latin America	9208 Palm River Road, Ste 305, Tampa, Florida 33619	Michael Gaffigan	954-914-6665	813-626-4545

LATIN & CARIBBEAN DISTRIBUTION

COUNTRY/REGION	ADDRESS	CONTACT	PHONE	FAX
Brazil	HARD, Rua Dr. Humberto Pinheiro Viera, 150 Lote B, 1 B Distrito Industrial, Joinville, Brazil		55-47-40097209	55-47-40097217
Colombia	Electrogeno, S.A., Carrera 52 #71c-38, Bogota, Colombia		(57) 1 6600 9436	
Costa Rica	Electro Mechanics Supply, La Uruca Contiguo Banco Ntrnl., De Costa Rica Condominio, Horizontal Bodega #9, San Jose, Costa Rica		(506) 2233-2595	
Dominican Republic	Calle Estancia Nueva #17 E Esquina Cul-De-Sac 9, San Geronimo, Santo Domingo	Rodfor Team	809-224-5615	809-472-8640
Ecuador	Acero Comercial Ecuatoriano S.A., Av. La Prensa N45-14 y Telégrafo 1 – Quito Av. Juan Tanca Marengo Km. 1.7 – Guayaquil	infoio@acero.comercial.com infofy@acero.comercial.com	(593-2) 2454 333 (593-4) 2683 060	(593-2) 2454 455 (593-4) 2683 059
Guatemala	Tecnofijaciones, 6 Avenue 8-56 Zona 9, Zona 9, Guatemala	Oscar Lucas Penagos	502-233-4-3478	
Panama	Centro-Industrial, Via Cincuentenario, No. 7910, Ciudad Panama, Panama		(507) 302-8022	
Peru	Powers Peruana SAC, Av. Santa Catalina, 555 La Victoria, Lima 13, Peru (www.powersperuana.com)	Martin Vasquez	(011) 511 265 8500	(011) 511 330 0909
Venezuela	Calle Sucre/Qta. Maudora, #1721 Entre Cec Acosta Y San Ignacio Chacao, Caracas	Distributor	58 212 264 1313	58 212 263 0219
Trinidad - Tobago	Ft. Farfan, 3-5 Ibis Avenue, Ibis Acres, San Juan	Derek Cumming	(868) 674-7896	

Note: The information and data contained within this documentation was current as of September 2010. The information is for marketing purposes only and is subject to change and updates as needed. Powers Fasteners, Inc. reserves the right to change designs and specifications without notice or liability for such changes. Please contact Powers Fasteners for the most current and up to date available information or refer to our website at www.powers.com

Powers Fasteners 2 Powers Lane, Brewster, NY 10509 P: (914) 235-6300 F:(914) 576-6483
Powers Fasteners Canada Ltd. 6950 Edwards Boulevard Mississauga Ontario L5T-2W2 Canada
 P: (905) 673-7295 or 1-800-387-3480 F: (905) 673-6490

**Jobsite
Assistance
24/7**



www.powers.com

Cat. No. 49084 09/10
 ©2010 Powers Fasteners, Inc.